

The logo for Bay Gallery Home features the text "BAY GALLERY HOME" in a sans-serif font. "BAY GALLERY" is in white on a red rectangular background, and "HOME" is in red on a white rectangular background. To the right of the text is a square with a red and white concentric circle pattern.

BAY GALLERY HOME

## My Country : design with origin

**Bay Gallery Home** presents its core ranges of wallpapers, fabrics, ceramic wall tiles & rugs, and bespoke made to order service.

Drawing upon the British manufacturing industry, My Country is a pioneering translation of authentic Central Australian Aboriginal artwork.

A true embodiment of Art in the everyday, this design iteration is expanding the global awareness of an ancient culture whilst providing its communities with additional revenue streams.

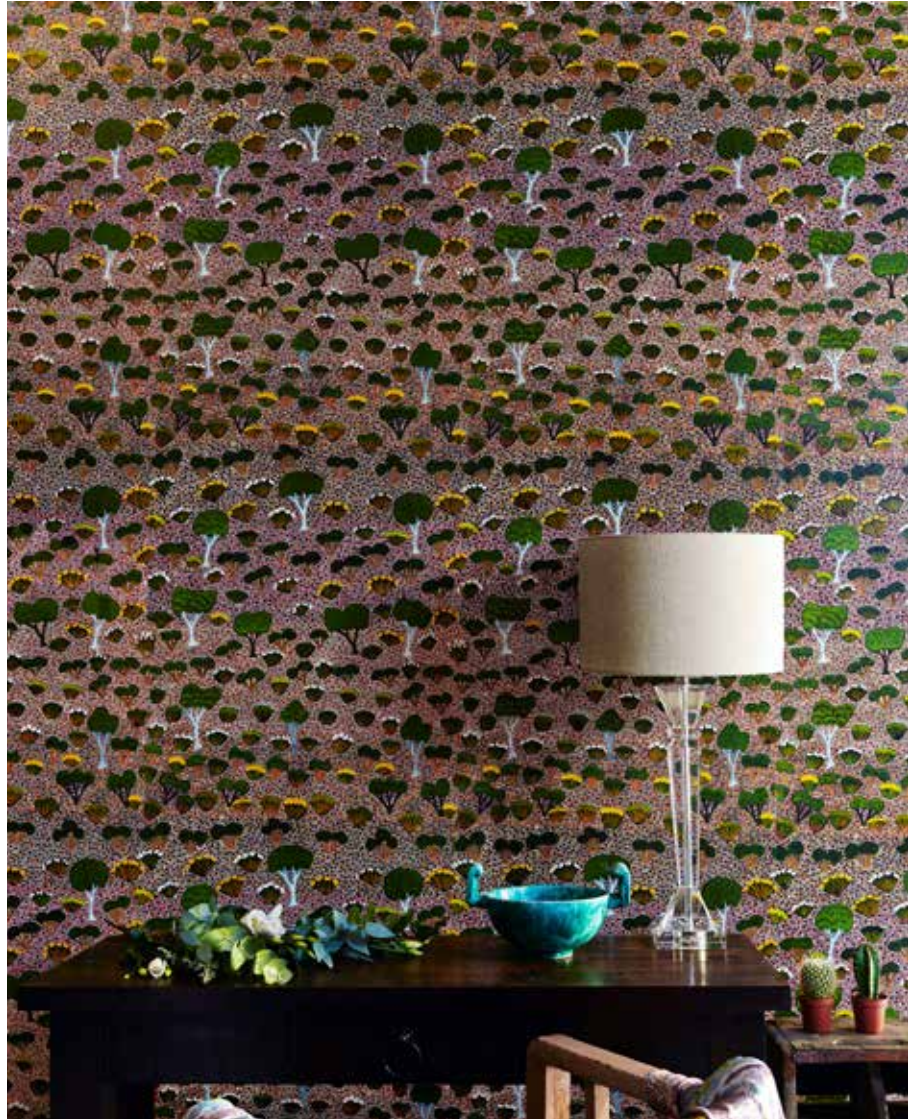
### **Bay Gallery Home**

Alexandra O'Brien

One Market Place | Tetbury | Gloucestershire  
GL8 8DA | England

(+44) (0) 7776 157 066

[alexandra@baygalleryhome.com](mailto:alexandra@baygalleryhome.com)  
[www.baygalleryhome.com](http://www.baygalleryhome.com)

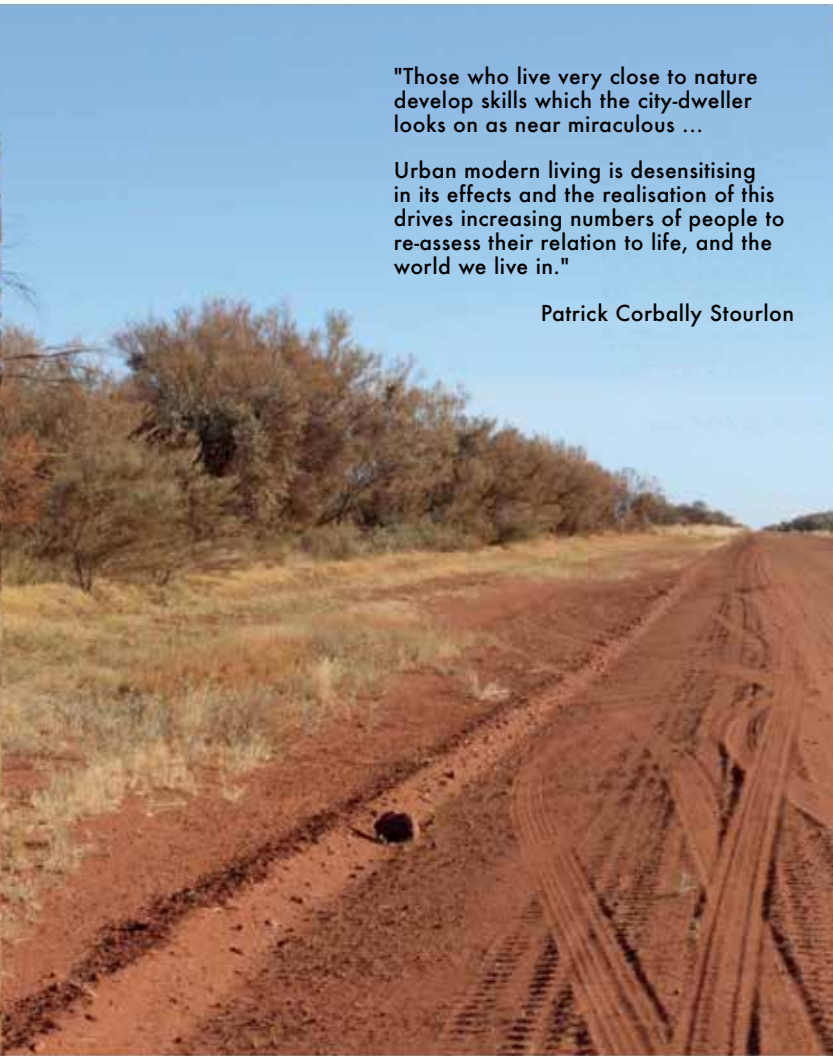




"Those who live very close to nature  
develop skills which the city-dweller  
looks on as near miraculous ...

Urban modern living is desensitising  
in its effects and the realisation of this  
drives increasing numbers of people to  
re-assess their relation to life, and the  
world we live in."

Patrick Corbally Stourlon



My Country references the Aboriginal philosophy and creative process, whereby all of creation is in relationship, at one with the land and animals.

Bay Gallery Home presents its core range of wallpapers, fabrics, rugs & ceramic wall tiles, and a made to order facility to designers and architects who may wish to commission exclusive bespoke pieces.

Due to the meaning and spiritual importance of every element in the artworks, we enlist state of the art techniques to ensure the detailed quality of each piece is preserved.

This artwork's particular provenance and symbols – inspired by mapping myths, rituals and sacred topography – results in a compelling, versatile aesthetic with a most subtle compositional depth of field, imbuing spaces with wider horizons of the imagination.

Its sophisticated visual language is composed of layers of regular irregularities of colour, geometry, repetition and scale dynamics. These abstractions and their visual coherence are perfect foils for modern minimalist forms as well as the more eclectic schemes.

Artist: Rosie Ngwarrae Ross  
Photo: © Lara Damiani Think Films





## MY COUNTRY WALLPAPERS



**ALANA PINK**

The land in dry season, when only the hardest bushes & established trees are still visible.



**MICHELLE BLUE**

Kangaroo plant and Pigweed, plentiful after the rain.



**LILLY GREEN**

The Australian outback, bush medicine & bush tucker plentiful after the rains.





### JOYCIE YELLOW

Joycies' traditional country "out Rum Jungle way" where she remembers the land she comes from.



### BETTY PINK

The different plants, bush foods and medicines changing with the light of the day and the seasons.



### DAISY BROWN

Bush plants used for healing on the body and for medicinal drinks.



### MELITA DUSTY PINK

The different plants, bush foods and medicines changing with the light of the day and the seasons.



BAY GALLERY HOME

## MY COUNTRY: design with origin

One Market Place | Tetbury | Gloucestershire | GL8 8DA  
alexandra@baygalleryhome.com | (+44) (0) 7776 157 066



www.baygalleryhome.com



### MICHELLE BLUE

Pattern Repeat: 62.2cm Straight  
Approx trimmed width: 52cm  
Approx Length: 10.05m  
Area: 5.23 sq m

Coated Non-Woven

Original artwork is by Michelle Pula Holmes

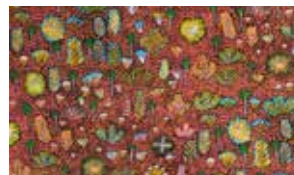


### JOYCIE YELLOW

Pattern Repeat: 50cm Straight  
Approx trimmed width: 52cm  
Approx Length: 10.0m  
Area: 5.23 sq m

Coated Non-Woven

Original artwork is by Joycie Pitjara Morton



### DAISY BROWN

Pattern Repeat: 29cm Straight  
Approx trimmed width: 52cm  
Approx Length: 10.0m  
Area: 5.23 sq m

Coated Non-Woven

Original artwork is by Daisy Kemarre Turner



### BETTY PINK

Pattern Repeat: 60cm Straight  
Approx trimmed width: 52cm  
Approx Length: 10.0m  
Area: 5.23 sq m

Coated Non-Woven

Original artwork is by Betty Pula Morton



### MELITA DUSTY PINK

Pattern Repeat: 46.5cm Straight  
Approx trimmed width: 52cm  
Approx Length: 10.05m  
Area: 5.23 sq m

Coated Non-Woven

Original artwork is by Melita Pitjara Morton



### LILLY GREEN

Pattern Repeat: 62.2cm Straight  
Approx trimmed width: 52cm  
Approx Length: 10.05m  
Area: 5.23 sq m

Coated Non-Woven

Original artwork is by Lilly Kemarre Morton



### ALANA PINK

Pattern Repeat: 62.2cm Straight  
Approx trimmed width: 52cm  
Approx Length: 10.05m  
Area: 5.23 sq m

Coated Non-Woven

Original artwork is by Alana Ngwarrae Holmes



## MY COUNTRY FABRICS



**ALANA PINK**

The land in dry season, when only the hardest bushes & established trees are still visible.



**MICHELLE BLUE**

Kangaroo plant and Pigweed, plentiful after the rain.



**LILLY GREEN**

The Australian outback, bush medicine & bush tucker plentiful after the rains.



## MY COUNTRY FABRICS



**MELITA DUSTY PINK**

The different plants, bush foods and medicines changing with the light of the day and the seasons.



**DAISY BROWN**

Bush plants used for healing on the body and for medicinal drinks.



**JOYCIE YELLOW**

Joycies' traditional country "out Rum Jungle way" where she remembers the land she comes from.



**BETTY PINK**

The different plants, bush foods and medicines changing with the light of the day and the seasons.







ROSIE BLUE

Rosie Ngwarraye Ross paints Sugerbag Dreaming, the name used for honey made by native bees and sweet necking coming from big yellow flower of the "tarkarr" trees.



ROSIE PINK

Rosie Ngwarraye Ross paints Sugerbag Dreaming, the name used for honey made by native bees and sweet necking coming from big yellow flower of the "tarkarr" trees.

## MY COUNTRY FABRICS



**RUTH RED**

Goanna Dreaming sits on Mt Theo in the Central Desert of Australia. It is a story of forbidden love. The area remains a source of yellow and white ochre for ceremonial purposes and magic love potions continued to be conjured.



**RUTH BLUE**

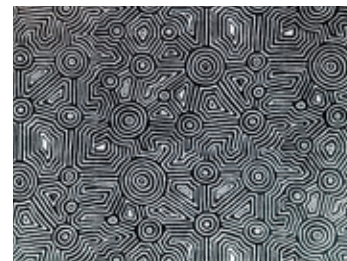
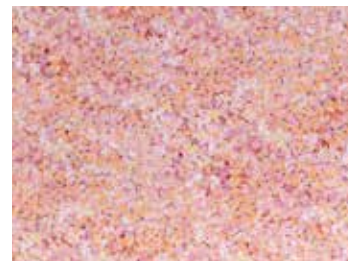


**RUTH PINK**



**BUSH ONION**

Bush Onion can be found in the river banks and are dug up using digging sticks.













MY COUNTRY: design with origin

One Market Place | Tetbury | Gloucestershire | GL8 8DA  
alexandra@baygalleryhome.com | (+44) (0) 7776 157 066

    www.baygalleryhome.com



#### ROSIE BLUE

Vertical Pattern repeat: 82cm  
Horizontal Pattern repeat: 45cm  
Repeat: Half drop

Original artwork is by Rosie Ngwarraye Ross

Cotton Half Panama: Weight 309gsm Width 146cm  
Linen Forte: Weight 228gsm Width 143cm  
Avanti Linen: Weight 350gsm Width 142cm  
Polyester Medium Pile: Weight 370gsm Width 136cm  
Cotton Velvet: Weight 416gsm Width 138cm



#### ROSIE PINK

Vertical Pattern repeat: 82cm  
Horizontal Pattern repeat: 45cm  
Repeat: Square step

Original artwork is by Rosie Ngwarraye Ross

Cotton Half Panama: Weight 309gsm Width 146cm  
Linen Forte: Weight 228gsm Width 143cm  
Avanti Linen: Weight 350gsm Width 142cm  
Polyester Medium Pile: Weight 370gsm Width 136cm  
Cotton Velvet: Weight 416gsm Width 138cm



#### RUTH RED

Vertical Pattern repeat: 53cm  
Horizontal Pattern repeat: 53cm  
Repeat: Half drop

Original artwork is by Ruth Nungarrayi Spencer

Cotton Half Panama: Weight 309gsm Width 146cm  
Linen Forte: Weight 228gsm Width 143cm  
Avanti Linen: Weight 350gsm Width 142cm  
Polyester Medium Pile: Weight 370gsm Width 136cm  
Cotton Velvet: Weight 416gsm Width 138cm



#### RUTH BLUE

Vertical Pattern repeat: 50cm  
Horizontal Pattern repeat: 50cm  
Repeat: Half drop

Original artwork is by Ruth Nungarrayi Spencer

Cotton Half Panama: Weight 309gsm Width 146cm  
Linen Forte: Weight 228gsm Width 143cm  
Avanti Linen: Weight 350gsm Width 142cm  
Polyester Medium Pile: Weight 370gsm Width 136cm  
Cotton Velvet: Weight 416gsm Width 138cm



#### RUTH PINK

Vertical Pattern repeat: 50.8cm  
Horizontal Pattern repeat: 76.9cm  
Repeat: Half drop

Original artwork is by Ruth Nungarrayi Spencer

Cotton Half Panama: Weight 309gsm Width 146cm  
Linen Forte: Weight 228gsm Width 143cm  
Avanti Linen: Weight 350gsm Width 142cm  
Polyester Medium Pile: Weight 370gsm Width 136cm  
Cotton Velvet: Weight 416gsm Width 138cm



#### LILLY GREEN

Vertical Pattern repeat: 62.2cm  
Horizontal Pattern repeat: 53cm  
Repeat: Square step

Original artwork is by Lilly Kemarre Morton

Cotton Half Panama: Weight 309gsm Width 146cm  
Linen Forte: Weight 228gsm Width 143cm  
Avanti Linen: Weight 350gsm Width 142cm  
Polyester Medium Pile: Weight 370gsm Width 136cm  
Cotton Velvet: Weight 416gsm Width 138cm



#### ALANA PINK

Vertical Pattern repeat: 43.2cm  
Horizontal Pattern repeat: 52cm  
Repeat: Square step

Original artwork is by Alana Ngwarraye Holmes

Cotton Half Panama: Weight 309gsm Width 146cm  
Linen Forte: Weight 228gsm Width 143cm  
Avanti Linen: Weight 350gsm Width 142cm  
Polyester Medium Pile: Weight 370gsm Width 136cm  
Cotton Velvet: Weight 416gsm Width 138cm



#### MELITA DUSTY PINK

Vertical Pattern repeat: 59.9cm  
Horizontal Pattern repeat: 29.5cm  
Repeat: Half drop

Original artwork is by Melita Pitjara Morton

Cotton Half Panama: Weight 309gsm Width 146cm  
Linen Forte: Weight 228gsm Width 143cm  
Avanti Linen: Weight 350gsm Width 142cm  
Polyester Medium Pile: Weight 370gsm Width 136cm  
Cotton Velvet: Weight 416gsm Width 138cm



#### DAISY BROWN

Vertical Pattern repeat: 29cm  
Horizontal Pattern repeat: 52cm  
Repeat: Half drop

Original artwork is by Daisy Kemarre Turner

Cotton Half Panama: Weight 309gsm Width 146cm  
Linen Forte: Weight 228gsm Width 143cm  
Avanti Linen: Weight 350gsm Width 142cm  
Polyester Medium Pile: Weight 370gsm Width 136cm  
Cotton Velvet: Weight 416gsm Width 138cm



#### JOYCIE YELLOW

Vertical Pattern repeat: 52cm  
Horizontal Pattern repeat: 49.75cm  
Repeat: Half drop

Original artwork is by Joycie Pitjara Morton

Cotton Half Panama: Weight 309gsm Width 146cm  
Linen Forte: Weight 228gsm Width 143cm  
Avanti Linen: Weight 350gsm Width 142cm  
Polyester Medium Pile: Weight 370gsm Width 136cm  
Cotton Velvet: Weight 416gsm Width 138cm



#### BETTY PINK

Vertical Pattern repeat: 52cm  
Horizontal Pattern repeat: 59.8cm  
Repeat: Half drop

Original artwork is by Betty Pula Morton

Cotton Half Panama: Weight 309gsm Width 146cm  
Linen Forte: Weight 228gsm Width 143cm  
Avanti Linen: Weight 350gsm Width 142cm  
Polyester Medium Pile: Weight 370gsm Width 136cm  
Cotton Velvet: Weight 416gsm Width 138cm



#### MICHELLE BLUE

Vertical Pattern repeat: 52cm  
Horizontal Pattern repeat: 52cm  
Repeat: Square Step

Original artwork is by Michelle Pula Holmes

Cotton Half Panama: Weight 309gsm Width 146cm  
Linen Forte: Weight 228gsm Width 143cm  
Avanti Linen: Weight 350gsm Width 142cm  
Polyester Medium Pile: Weight 370gsm Width 136cm  
Cotton Velvet: Weight 416gsm Width 138cm



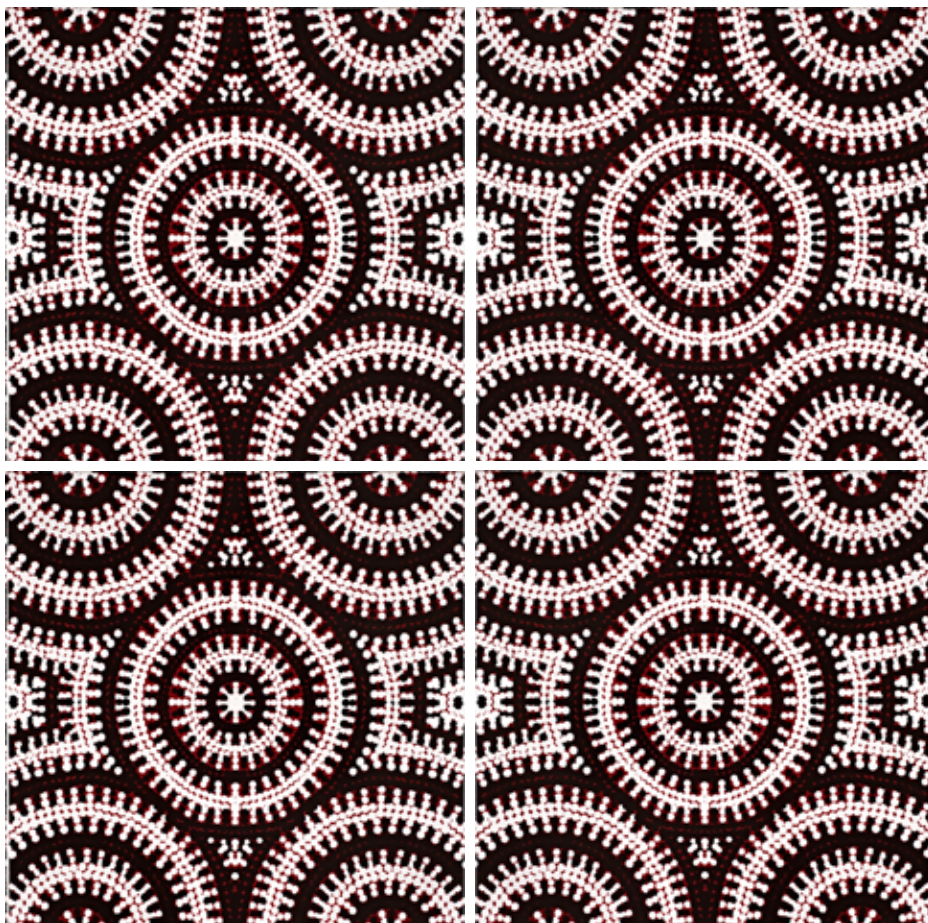
#### BUSH ONION

Vertical Pattern repeat: 66.5cm  
Horizontal Pattern repeat: 82.95cm  
Repeat: Half drop

Original artwork is by Sarah Napurrurla White

Cotton Half Panama: Weight 309gsm Width 146cm  
Linen Forte: Weight 228gsm Width 143cm  
Avanti Linen: Weight 350gsm Width 142cm  
Polyester Medium Pile: Weight 370gsm Width 136cm  
Cotton Velvet: Weight 416gsm Width 138cm





## MY COUNTRY CORE TILES

BUSH ONION 1

BUSH ONION 2

EMU DREAMING

### **Dimensions:**

30cm x 30cm  
Ceramic wall tiles

### **Tile artists:**

Sarah Napurrula White  
(BUSH ONION 1&2)

Geraldine Nangala Gallagher  
(EMU DREAMING)

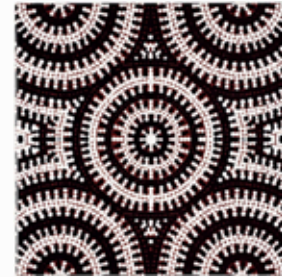


Bush Onion 1

Bush Onion can be found in the river banks and are dug up using digging sticks.



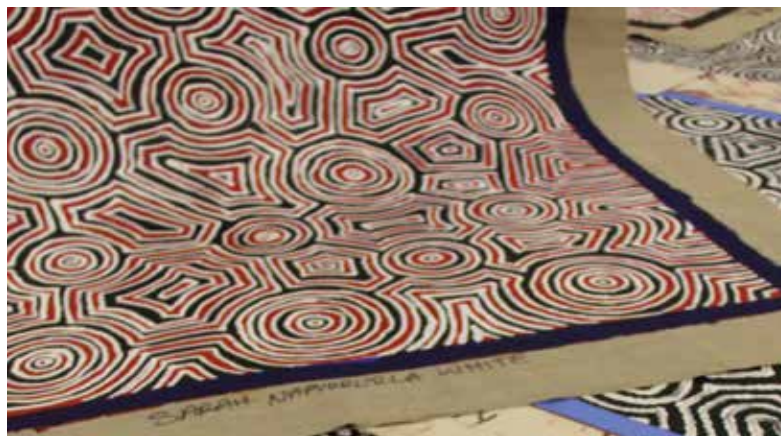
Bush Onion 2



Emu Dreaming

Emu Dreaming denotes a sacred waterhole where initiation ceremonies are performed. In the Dreamtime, Emus and Australian Bustard could be found fighting over bush raisins.





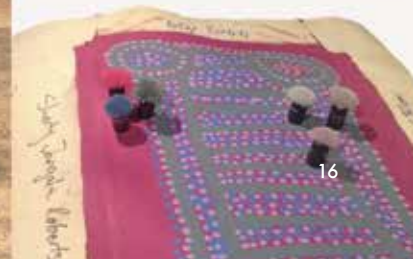


## MY COUNTRY RUGS

Boy Gallery Home's rugs are made to specification, hand knotted in Nepal and available in silk, viscose and wool.

Our rugs are design iterations of paintings depicting the Australian Aboriginal Dreamtime: the 40,000 - 60,000 year-old creation myths that serve as practical survival and moral guides.

My Country rugs subscribe to the Goodweave programme which certifies child-labour free rugs.

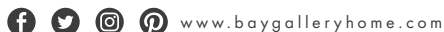






**MY COUNTRY:**  
design with origin

One Market Place | Tetbury  
Gloucestershire | GL8 8DA  
alexandra@baygalleryhome.com  
(+44) (0) 7776 157 066



## 'MY COUNTRY' INTERIORS PRICE LIST

---

### WALLPAPER

#### All Wallpaper Collections

Per Roll | 10m x 52cm

Price: £90.00 | RRP: £150.00

### FABRICS

**Linen Forte** - Per Metre

Price: £72.00 | RRP: £120.00

**Avanti Linen** - Per Metre

Price: £72.00 | RRP: £120.00

**Cotton Velvet** - Per Metre

Price: £90.00 | RRP: £150.00

**Polyester Medium Pile Velvet** - Per Metre

Price: £66.00 | RRP: £110.00

**Cotton Half Panama** - Per Metre

Price: £66.00 | RRP: £110.00

---

### CERAMIC WALL TILES

#### All Tiles

Per Tile | 30cm x 30cm

Price: £18.00 | RRP: £30.00

### WOOL RUGS

#### Water Dreaming

Per Rug | Nepalese wool £620m<sup>2</sup>

Price: TBA | RRP: TBA

#### Mina Mina Dreaming

Per Rug | Nepalese wool £620m<sup>2</sup>

Price: TBA | RRP: TBA

#### Water Dreaming Puyurru

Per Rug | Nepalese wool £620m<sup>2</sup>

Price: TBA | RRP: TBA

#### Kelim

Indian Flat Weave rug

Minimum size 2.13mx1.52m | £300m<sup>2</sup>

Price: TBA | RRP: TBA

#### Please note the following:

Discounts may be negotiated dependent of quantities ordered.

Prices are exclusive of delivery and other necessary charges or taxes which may apply. We do not charge VAT.

All prices are subject to change.



## ART, DESIGN & CULTURE

Bay Gallery Home's core ranges & made to order service is informed by gallery space interactions, by observing what customers are drawn to and why.

It is inspired by personal responses to something often never before seen which is deeply attractive, compelling and emotive.

Our sense of home, of belonging is educated by spaces of safety as much as by invitations to imagine, adventure, expand our horizons.

The Australian Aboriginal visual language is a repository of stories passed down through generations to guide and encourage its communities as they engage with life's journey.

The artists we work with are remunerated for the original purchase of artwork, and receive a percentage of the interiors sales. This secondary income stream has direct bearing on the mobility, educational and work opportunities of often marginalised communities. By investing in the cultural and financial lives of its artists, Bay Gallery Home's My Country collection provides us with opportunity to share in its artists' worldview whilst affirming theirs.

As we engage with the vibrant harmonies of their work and let ourselves be drawn in, we recognise that interior spaces are not just shelters from the elements, but locii of personal and communal identity, where art and design invite us into a richer experience.

Original artwork is by Michelle Pula Holmes





## DESIGN WITH ORIGIN

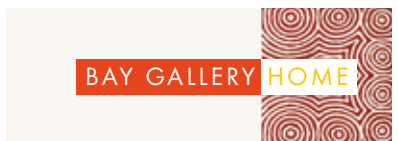
With access to a vast scope of original Aboriginal Art, and in consultation with industry specialists, Bay Gallery Home offers a range of core products and extends a made to order facility to designers and architects who may wish to commission exclusive bespoke pieces.

Bay Gallery Home's relationship with the Central Australian Aboriginal artists is one of trust, founded on respect for their heritage and contemporary way of life. My Country was therefore created with the utmost consideration for codes of conduct and spiritual sensibilities.

By exposing the culture to a broader international audience, the collection contributes to the debate about archaeology, horticulture, botany, anthropology and the preservation of ancient & indigenous cultures.



Artist: Top: Ruth Napaljarri Stewart  
Bottom: Colleen Ngwarraye Morton  
Photo: Bottom: © Lara Damiani Think Films



Should you be interested in any of our core ranges, or in commissioning an exclusive design from our collection of original artworks, please do not hesitate to get in touch with us at:

**Bay Gallery Home**  
Alexandra O'Brien

One Market Place | Tetbury | Gloucestershire  
GL8 8DA | England

(+44) (0) 7776 157 066

[alexandra@baygalleryhome.com](mailto:alexandra@baygalleryhome.com)  
[www.baygalleryhome.com](http://www.baygalleryhome.com)



Designed by Bay Gallery Home, made in the UK.  
© Bay Gallery Home 2021

